

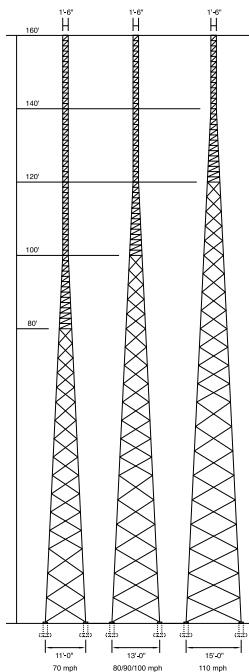
1800 SRWD Freestanding/Bracketed Tower

Tower Profile	
Load location	Top
Maximum height	85' Freestanding / 125' Bracketed
Minimum height	10' Freestanding / 20' Bracketed
Standard 10' section weight (lbs.) (galv.)	199.23 (1.25" Leg) / 253.68 (1.50" Leg)
Maximum # of lines on a face	2 (7/8") lines per face (6 - total)
Leg size	1.25" and 1.50"
Leg type	Solid round
Leg connection	Three hole bolted flange
Bracing size	1/2"
Bracing type	Solid serpentine
Brace connection	Welded
Engineering	Pre-engineered
Climbing application	Incorporated into tower face
Type of line support	N/A - Attach directly to bracing members
Sector mount compatible	No
Platform compatible	No
Maximum sidearm length	6'

NOTES:

1) ANSI/TIA/EIA-222-F-1996 and ANSI/TIA-222-G-2005 recommend that designs be evaluated by a registered professional engineer for each specific application.

2) The 1800 SRWD is also available as a custom engineered guyed tower.



NOTES:

1) ANSI/TIA/EIA-222-F-1996 and ANSI/TIA-222-G-2005 recommend that designs be evaluated by a registered professional engineer for each specific application.

2) For taller or more heavily loaded self-supporting towers, please see the Series VL Self-Supporting Towers.

3) For shorter or more lightly loaded self-supporting towers, please see the 1800 SRWD Freestanding.

Series UL Self-Supporting Tower

Tower Profile	
Load location	Top
Maximum height	160'
Minimum height	50'
Minimum top spread	1'6"
Maximum base spread	15'
Maximum # of lines on a face	1 (7/8") line per face (3 total)
Taper ratio	Varies
Section lengths	10' & 20'
Leg type	Solid or tubular
Leg size range (solid)	1 1/4" OD or 1 1/2" OD
Leg size range (tubular)	2 3/8" OD to 4 1/2" OD
Leg connection	Bolted flange
Brace type	Solid or angle
Brace size range (solid)	1/2" dia. and 3/4" dia.
Brace size range (angle)	1 1/2" x 1 1/2" x 1/8" to 2 1/2" x 2 1/2" x 3/16"
Brace style	Solid serpentine welded or bolted angle x-braced
Engineering	Pre-engineered
Climbing application	Straight sec.: Inc. into face Tapered sec.: Step bolts
Type of line supports considered	N/A - Attach directly to bracing members
Maximum sidearm length	3' (two maximum)