

Stainless Steel Threaded Rod Coupler

Item #	Description	Wt. lb	Wt. kg.
C40-016-001	3/8" (9.53 mm) diameter	0.10	0.05
C40-016-002	1/2" (12.7 mm) diameter	0.10	0.05

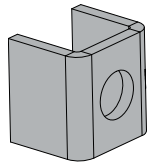


Galvanized Steel Step Bolt Assembly

Standard Step Bolt - All parts are galvanized in accordance with ASTM A153. Each assembly includes one (1) ASTM A394 Type O Step Bolt and two (2) Hex Nuts.

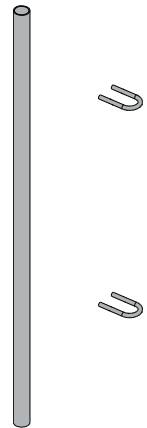
Loop Step Bolt - All parts are galvanized in accordance with ASTM A153. Each assembly includes one (1) ASTM A394-92A Step Bolt and one (1) Hex Nut. (*Custom Step Bolts can be provided upon request.*)

Item #	Description	Wt. lb.	Wt. kg.
C40-044-001	5/8" diameter x 6 1/2" long, 2 1/2" thread length (15.88 mm x 165.1 mm, 63.5 mm)	0.50	0.23
C40-044-002	5/8" diameter x 7" long, 1 3/4" thread length (15.88 mm x 177.80 mm, 44.45 mm)	1.00	0.45
Loop Step Bolt for Monopoles			
C40-044-003	5/8" diameter x 8" long, 2 1/4" thread length (15.88 mm x 203.2 mm, 57.15 mm)	1.80	0.82



Step Bolt Clip, Black Steel

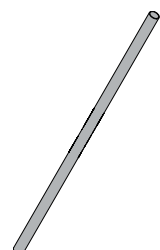
Item #	Description	Wt. lb.	Wt. kg.
TWS00081	For 5/8" Step Bolts (15.88 mm)	0.30	0.14



Antenna Mounting Pipe Kit

Antenna Mounting Pipe Kits are available in a variety of lengths to meet all of your antenna mounting needs. Kit includes one (1) Antenna Mounting Pipe and two (2) U-Bolt Assemblies.

Item #	Description	Wt. lb.	Wt. kg.
C10-900-105	2 3/8" OD x 5' long (60.33 mm x 1.52 m)	22.30	10.12
C10-900-106	2 3/8" OD x 6' long (60.33 mm x 1.83 m)	26.10	11.84
C10-900-107	2 3/8" OD x 7' long (60.33 mm x 2.13 m)	29.90	13.56
C10-900-108	2 3/8" OD x 8' long (60.33 mm x 2.44 m)	33.70	15.29
C10-900-123	2 3/8" OD x 8'6" long (60.33 mm x 2.59 m)	35.60	16.15
C10-900-109	2 3/8" OD x 9' long (60.33 mm x 2.74 m)	37.50	17.01
C10-900-110	2 3/8" OD x 10' long (60.33 mm x 3.05 m)	41.30	18.73
C10-900-125	2 3/8" OD x 10'6" long (60.33 mm x 3.20 m)	43.20	19.60



Galvanized Steel Bulk Pipe

Item #	Description	Wt. lb.	Wt. kg.
C10-981-221	2 3/8" OD pipe, 21' long (60.33 mm, 6.4 m)	67.40	30.57
C10-901-321	2 7/8" OD pipe, 21' long (73.03 mm, 6.4 m)	126.50	57.38
C10-901-521	3 1/2" OD pipe, 21' long (88.9 mm, 6.4 m)	165.50	75.07
C10-901-421	4 1/2" OD pipe, 21' long (114.3 mm, 6.4 m)	235.70	106.91