

1200 TLWD Guyed/Freestanding/Bracketed Tower

Tower Profile	
Load location	Top
Maximum height	200'
Minimum height	40'
Standard 10' section weight (lbs.) (galv.)	81.10
Maximum # of lines on a face	1 (7/8") line per face (3 - total)
Guy strand size	3/16", 1/4" EHS
Leg size	1.315" OD
Leg type	Tubular
Leg connection	Three hole bolted flange
Bracing size	3/8"
Bracing type	Solid serpentine
Brace connection	Welded
Engineering	Pre-engineered
Climbing application	Incorporated into tower face
Type of line support	N/A - Attach directly to bracing members
Sector mount compatible	No
Platform compatible	No
Maximum sidearm length	3'



NOTES:

- 1) ANSI/TIA/EIA-222-F-1996 and ANSI/TIA-222-G-2005 recommend that designs be evaluated by a registered professional engineer for each specific application.
- 2) For taller or more heavily loaded guyed towers, please see 1800 TLWD.
- 3) Custom engineering of the 1200 TLWD Guyed Tower is available for non-standard loading requirements.

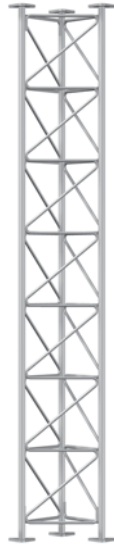
1800 TLWD Guyed/Freestanding/Bracketed Tower

Tower Profile	
Load location	Top
Maximum height	280'
Minimum height	40'
Standard 10' section weight (lbs.) (galv.)	137.70
Maximum # of lines on a face	2 (7/8") lines per face (6 - total)
Guy strand size	1/4", 5/16", 3/8" EHS
Leg size	1.66" OD
Leg type	Tubular
Leg connection	Three hole bolted flange
Bracing size	1/2"
Bracing type	Solid serpentine
Brace connection	Welded
Engineering	Pre-engineered
Climbing application	Incorporated into tower face
Type of line support	N/A - Attach directly to bracing members
Sector mount compatible	No
Platform compatible	No
Maximum sidearm length	6'



NOTES:

- 1) ANSI/TIA/EIA-222-F-1996 and ANSI/TIA-222-G-2005 recommend that designs be evaluated by a registered professional engineer for each specific application.
- 2) For shorter or more lightly loaded guyed towers, please see 1200 TLWD.
- 3) Custom engineering of the 1800 TLWD Guyed Tower is available for non-standard loading requirements.



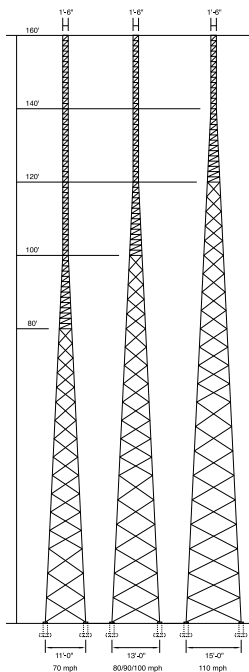
1800 SRWD Freestanding/Bracketed Tower

Tower Profile	
Load location	Top
Maximum height	85' Freestanding / 125' Bracketed
Minimum height	10' Freestanding / 20' Bracketed
Standard 10' section weight (lbs.) (galv.)	199.23 (1.25" Leg) / 253.68 (1.50" Leg)
Maximum # of lines on a face	2 (7/8") lines per face (6 - total)
Leg size	1.25" and 1.50"
Leg type	Solid round
Leg connection	Three hole bolted flange
Bracing size	1/2"
Bracing type	Solid serpentine
Brace connection	Welded
Engineering	Pre-engineered
Climbing application	Incorporated into tower face
Type of line support	N/A - Attach directly to bracing members
Sector mount compatible	No
Platform compatible	No
Maximum sidearm length	6'

NOTES:

1) ANSI/TIA/EIA-222-F-1996 and ANSI/TIA-222-G-2005 recommend that designs be evaluated by a registered professional engineer for each specific application.

2) The 1800 SRWD is also available as a custom engineered guyed tower.



NOTES:

1) ANSI/TIA/EIA-222-F-1996 and ANSI/TIA-222-G-2005 recommend that designs be evaluated by a registered professional engineer for each specific application.

2) For taller or more heavily loaded self-supporting towers, please see the Series VL Self-Supporting Towers.

3) For shorter or more lightly loaded self-supporting towers, please see the 1800 SRWD Freestanding.

Series UL Self-Supporting Tower

Tower Profile	
Load location	Top
Maximum height	160'
Minimum height	50'
Minimum top spread	1'6"
Maximum base spread	15'
Maximum # of lines on a face	1 (7/8") line per face (3 total)
Taper ratio	Varies
Section lengths	10' & 20'
Leg type	Solid or tubular
Leg size range (solid)	1 1/4" OD or 1 1/2" OD
Leg size range (tubular)	2 3/8" OD to 4 1/2" OD
Leg connection	Bolted flange
Brace type	Solid or angle
Brace size range (solid)	1/2" dia. and 3/4" dia.
Brace size range (angle)	1 1/2" x 1 1/2" x 1/8" to 2 1/2" x 2 1/2" x 3/16"
Brace style	Solid serpentine welded or bolted angle x-braced
Engineering	Pre-engineered
Climbing application	Straight sec.: Inc. into face Tapered sec.: Step bolts
Type of line supports considered	N/A - Attach directly to bracing members
Maximum sidearm length	3' (two maximum)