

RADIO 4408

The micro Radio 4408 is part of the Ericsson Radio System portfolio. Radio 4408 has best in class design, superior radio performance and power efficiency when it comes to medium range 3GPP radio products.

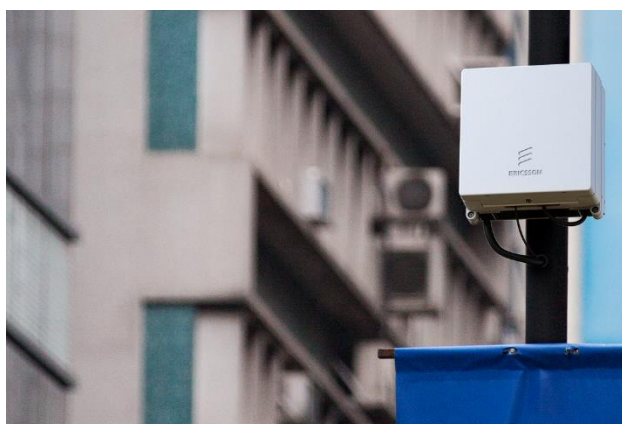
Radio 4408 has, by use of its small and smart dimensions, support for a wide range of mounting scenarios and has a pioneering flexibility within its product segment. With the Radio 4408, Ericsson evolves the micro radio portfolio to become even more flexible thus making it easier than ever to make small and efficient single and multi-band micro radio installations.

The Radio 4408 supports installations with integrated or external antenna systems and can by use of the versatile optical CPRI interface be connected to any of the efficient Ericsson Baseband LTE modules by use of star or cascade configurations supporting multi sector and multi band.

Radio 4408 supports LTE TDD with four duplex TX/RX branches supporting up to 4 x 5 W output power.



Below on the right side you see a picture of the Radio 4408 mounted on a lamp pole. The picture beside it shows the back part of the Radio 4408, the support system in which the wall mount and pole mount are integrated.



Technical specification for Radio 4408

FREQUENCY BANDS

Bands: B38A, B40U, B41, B42, B43, B48, B77C

HW CAPACITY

Carrier capacity: Up to 6 LTE carriers, Up to 100MHz NR carrier bandwidth

IBW: Up to 150MHz

MIMO: Yes, 4T4R

Output power: 4 x 5 W

INTERFACE SPECIFICATIONS

Antenna ports: 4 x NEX10 (f)

CPRI: 2 x 2.5/5/10 Gbps (exchangeable SFP modules)

Optical indicators: 6

External alarms: 2

Field ground: 1

MECHANICAL SPECIFICATIONS

Weight: < 5 kg

Volume: 4 liters including mounting bracket and esthetic front cover
 HWD=200x200x102mm without protruding
 HWD=213.5x200x105mm with protruding

Mounting: Rail, wall and pole mount

ELECTRICAL SPECIFICATIONS

Power Supply: -48 VDC or 100 - 250 VAC

ENVIRONMENTAL SPECIFICATIONS

Normal operating temp.: -40 °C to +55 °C (cold start at -40 °C)

Relative Humidity: 5 – 100%

Environment: Outdoor class with IP65